

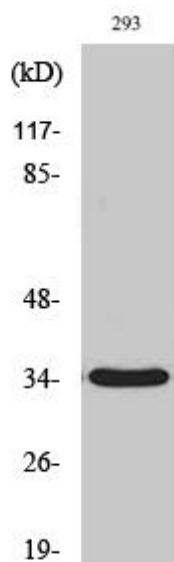


# GRTP1 Polyclonal Antibody

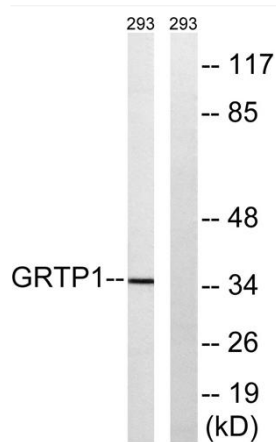
<b>Catalog No</b>	YP-Ab-16166
<b>Isotype</b>	IgG
<b>Reactivity</b>	Human;Rat;Mouse;
<b>Applications</b>	WB;IHC;IF;ELISA
<b>Gene Name</b>	GRTP1
<b>Protein Name</b>	Growth hormone-regulated TBC protein 1
<b>Immunogen</b>	The antiserum was produced against synthesized peptide derived from human GRTP1. AA range:71-120
<b>Specificity</b>	GRTP1 Polyclonal Antibody detects endogenous levels of GRTP1 protein.
<b>Formulation</b>	Liquid in PBS containing 50% glycerol, 0.5% BSA and 0.02% sodium azide.
<b>Source</b>	Polyclonal, Rabbit,IgG
<b>Purification</b>	The antibody was affinity-purified from rabbit antiserum by affinity-chromatography using epitope-specific immunogen.
<b>Dilution</b>	WB: 1/500 - 1/2000. IHC: 1/100 - 1/300. ELISA: 1/40000.. IF 1:50-200
<b>Concentration</b>	1 mg/ml
<b>Purity</b>	≥90%
<b>Storage Stability</b>	-20°C/1 year
<b>Synonyms</b>	GRTP1; TBC1D6; Growth hormone-regulated TBC protein 1; TBC1 domain family member 6
<b>Observed Band</b>	35kD
<b>Cell Pathway</b>	intracellular,endomembrane system,
<b>Tissue Specificity</b>	Brain,Cervix carcinoma,Kidney epithelium,Ovary,Pancreas,Uterus,
<b>Function</b>	function:May act as a GTPase-activating protein for Rab family protein(s).,similarity:Contains 1 Rab-GAP TBC domain.,
<b>Background</b>	function:May act as a GTPase-activating protein for Rab family protein(s).,similarity:Contains 1 Rab-GAP TBC domain.,
<b>matters needing attention</b>	Avoid repeated freezing and thawing!
<b>Usage suggestions</b>	This product can be used in immunological reaction related experiments. For more information, please consult technical personnel.



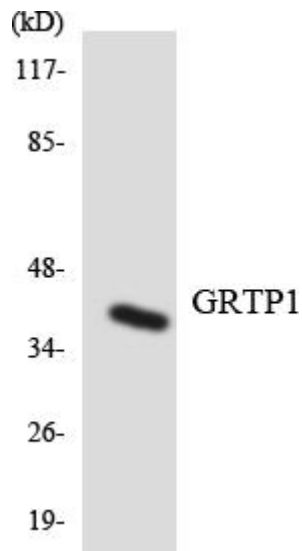
## Products Images



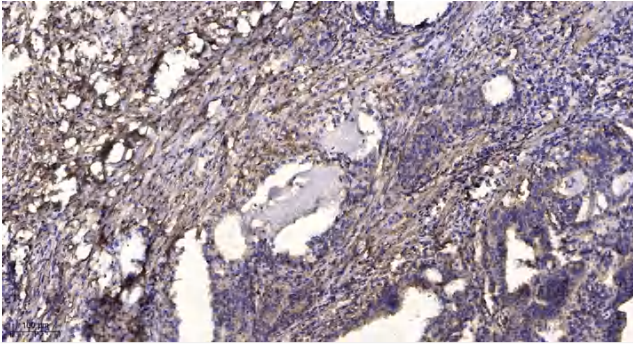
Western Blot analysis of various cells using GRTP1 Polyclonal Antibody



Western blot analysis of lysates from 293 cells, using GRTP1 Antibody. The lane on the right is blocked with the synthesized peptide.



Western blot analysis of the lysates from Jurkat cells using GRTP1 antibody.



Immunohistochemical analysis of paraffin-embedded human Gastric adenocarcinoma. 1, Antibody was diluted at 1:200(4° overnight). 2, Tris-EDTA,pH9.0 was used for antigen retrieval. 3,Secondary antibody was diluted at 1:200(room temperature, 45min).